

# AES-28/50/75/110/150 RFG

## Sterilization Autoclaves

with counter pressure and fast cooling



AES-75 RFG

### Advantages:

- Reduces the total cycle time until 50%.
- At the end of the process you can manipulate the sterilized materials thanks to output temperature set point.
- This equipment is design to sterilize cans, jars, plastic bags, glass bottles, hermetically closed. This system avoids that broken using the programmable pressure control.
- Flood or shower cooling system.
- 10 fixed programs 115°C; 121°C and 134°C.
- It can be used as a standard autoclave, without counter pressure and cooling.
- Programmable auto-start (24 hours).
- RS-232 / USB connection.
- Optional data logger software to send the cycle data to a PC. Then you can analysis graphically or numerically. Also you can export data to standard spreadsheet.
- On board or top table printer.

# AES-28/50/75/110/150 RFG

## Sterilization Autoclaves

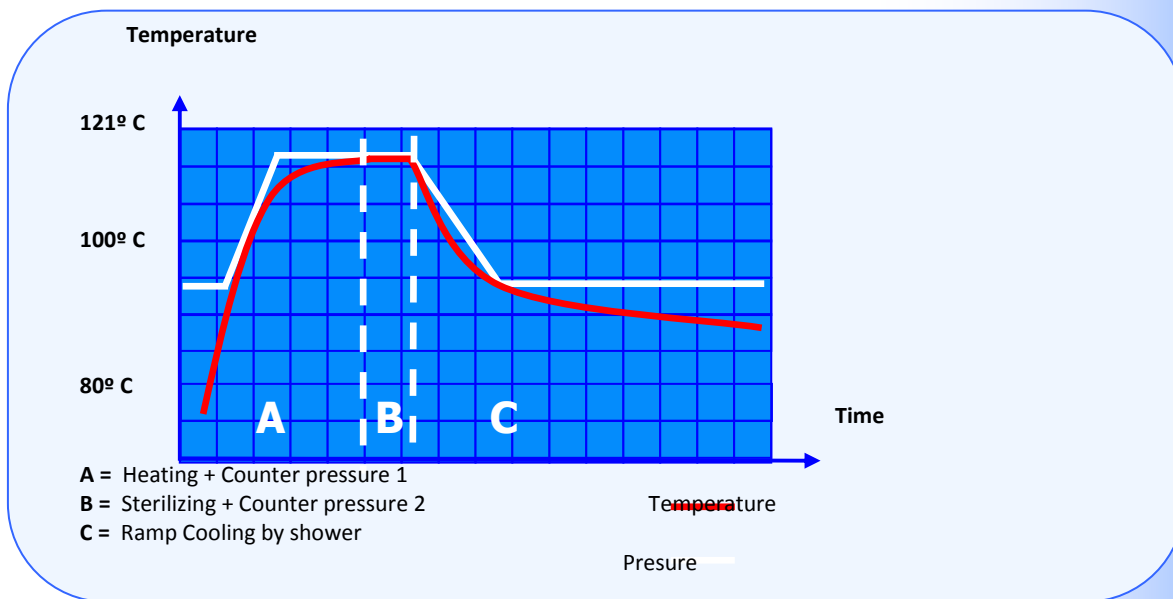
with counter pressure and fast cooling



### Operating principle

This autoclave includes a powerful compressor, the program increases the pressure on the chamber to avoid that the cans explode. The fast cooling system uses a shower water inlet and fast evacuating valve in the chamber.

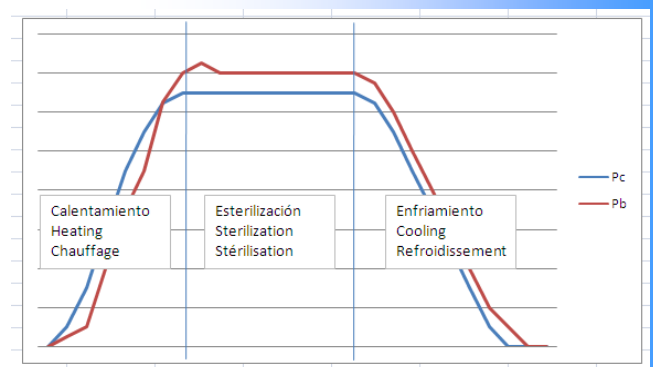
### Cycle sterilizing graph



Autoclaves

### Intended use:

- Sterilizing hermetically sealed containers that need a pressure control during the process to avoid implosions or explosions.
- Quality controls on closures twist-off type.
- Quality controls on canned goods.
- General test and analytics on cans and closures.
- Very short cycle sterilizing procedures.
- Also can be used as a standard autoclave.



# AES-28/50/75/110/150 RFG

## Sterilization Autoclaves

### with counter pressure and fast cooling



#### What problems does it solve?

When you sterilize sealed containers, as can, food, etc the internal container pressure  $P_b$  has a different behavior than the sterilization chamber  $P_c$ . Use our equipment AES-RFG, that controls on all the cycle the pressure, helps to have the parameter controlled during all cycle.

#### To whom it is intended?

- Food containers manufacturer, on glass, metal, plastic, polyethylene trays covered with plastic film.
- Handmade food producer, like jam, sauces.
- Sealing test laboratories.
- High capacity laboratories.

#### Features:

- External case, top table, chamber, door and closure made in Stainless Steel AISI-304.
- Fast cooling system using tap water.
- Total control by microprocessor.
- Ten fixed programs (cycles).
- RS-232 connector to connect a serial printer or PC.
- Chamber hole to introduce the validation probe.
- Include the heater protection grid.

#### Programas pre-establecidos

	TEMPERATURE	COUNTER PRESSURE	TIME
P0	115°C	1,0 bar	30'
P1	115°C	1,0 bar	60'
P2	115°C	1,0 bar	90'
P3	121°C	1,5 bar	20'
P4	121°C	1,5 bar	30'
P5	121°C	1,5 bar	60'
P6	121°C	1,5 bar	90'
P7	134°C	2,4 bar	30'
P8	134°C	2,4 bar	60'
P9	134°C	2,4 bar	90'

\*\*\* Ask if you need other parameters.

Autoclaves

# AES-28/50/75/110/150 RFG

## Sterilization Autoclaves

with counter pressure and fast cooling



### Safety:

Over temperature thermostat, safety overpressure valve, overpressure transducer.  
Blocking locking hydraulic device if exist pressure on the chamber. Open door sensor.

Referencia Reference Référence	Litros Litres	Capacidad Capacity Capacité	Ø x H. Cm	H x A x F en cm H x L x D in cm H x L x P en cm	Presión máx. Max. pressure Pression max.	W	Kg.
AES-28 RFG	33 L	28 L	30 x 40	101 x 51 x 56	2,5 bar	3.200	60
AES-50 RFG	50 L	50 L	30 x 70	125 x 51 x 56	2,5 bar	3.200	80
AES-75 RFG	79 L	75 L	40 x 60	109 x 62 x 73	2,5 bar	6.000	85
AES-110 RFG	115 L	110 L	40 x 85	133 x 63 x 73	2,5 bar	6.000	114
AES-150 RFG	175 L	150 L	50 x 75	131 x 76 x 85	2,5 bar	9.000	140

## Accessories

### Perforated stainless steel basket

Reference	Model	Dimensions	Qty. Baskets autoclave	Weight kg.
CI-12	AES-12	225(Ø) x 215 mm	1	1
CI-28	AES-28	280(Ø) x 200 mm	2	1,5
CI-75	AES-75	380(Ø) x 260 mm	2	2,5
CI-75	AES-110	380(Ø) x 260 mm	3	2,5
CI-150	AES-150	475(Ø) x 360 mm	2	4



### Non perforated stainless steel basket

Reference	Model	Dimensions	Qty. Baskets autoclave	Weight kg.
CCI-12	AES-12	225(Ø) x 215 mm	1	1
CCI-28	AES-28	280(Ø) x 200 mm	2	1,5
CCI-75	AES-75	380(Ø) x 260 mm	2	2,5
CCI-75	AES-110	380(Ø) x 260 mm	3	2,5
CCI-150	AES-150	475(Ø) x 360 mm	2	4



# AES-28/50/75/110/150 RFG

## Sterilization Autoclaves

with counter pressure and fast cooling



### Accessories

#### Wired stainless steel basket

Reference	Model	Dimensions	Qty. Baskets autoclave	Weight kg.
CV-12	AES-12	220(Ø) x 200 mm	1	1
CV-28	AES-28	270(Ø) x 200 mm	2	1,5
CV-75	AES-75	370(Ø) x 280 mm	2	2,5
CV-75	AES-110	370(Ø) x 280 mm	3	2,5
CV-150	AES-150	470(Ø) x 250 mm	3	4



#### Thermal paper printer

It prints program number, cycle number, temperature, date and hour of the run. Error messages are also printed. To be included on the order and installed in our facilities. **Referencia: IT**



#### Table top printer

it prints program number, cycle number, temperature, date and hour of the run. Error messages are also printed. **Reference: ITS**



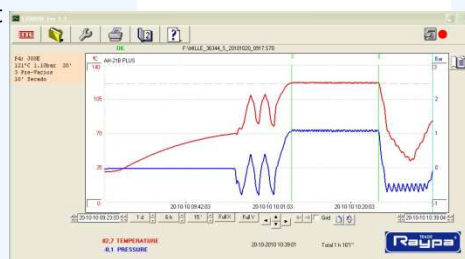
#### PC connection kit by RS232

Communication software Kit for the connection and use the equipment and the PC. Thought the RS 232 interface.

Includes: female USB-RS232 converter and CD

Male-male DB-9 cable to connect converter and the equipment

**Reference: SOFT-RS232**



# AES-28/50/75/110/150 RFG

Sterilization Autoclaves

with counter pressure and fast cooling



## Sterilization control test

Sterilization indicator tape.

Reference: TEST-CT

